



[Browse Product Range >](#)

## Westfield Fasteners Product Specification:

### Threaded Inserts for Wood Type B - Similar to DIN 7965

This product guide contains the specification for a range of threaded inserts designed for installation in wood, type B, available from Westfield Fasteners. The basis of this specification is the DIN standard DIN 7965.

#### Product Description

Designed to be used in soft wood, plywood, chipboard and MDF, these threaded inserts have a deep coarse-pitched external wood thread and an internal metric coarse thread. Ideal for furniture and wooden constructions, they provide a changeover of thread types, allowing metal components to be attached to wood. These threaded inserts are also useful for making repairs where a fixing point has become worn out or stripped.

Threaded inserts are also known as threaded bushings, screwed inserts and screw-in sleeves.

#### Scope of the DIN Standard.

DIN 7965 states the dimensions for threaded inserts from M3 to M20, and offers a guide size for the pre-drilled hole. See table 1 below for this information.

#### Variations from the DIN Standard.

The items covered in this specification vary from DIN 7965 by the inclusion of an internal thread for the whole length of the insert. Figure 1 and table 1 show the dimensions for these parts. It should be noted that whilst they are defined, not all sizes are available.

For information purposes, figure 2 in appendix I illustrates the thread insert in full accordance with DIN 7965.

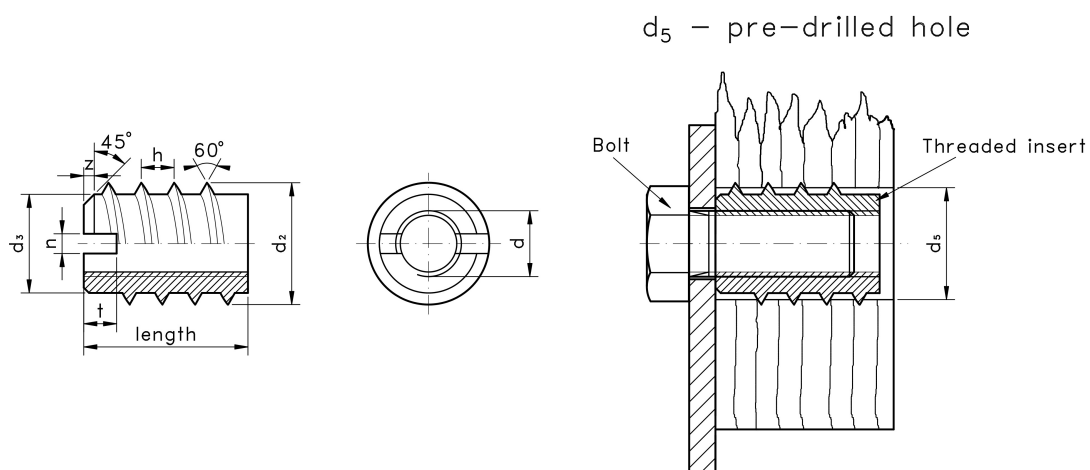


Figure 1: Threaded Insert for Wood Type B, similar to DIN 7965

**Table 1: Dimensions & Tolerances according to DIN 7965 (mm)**

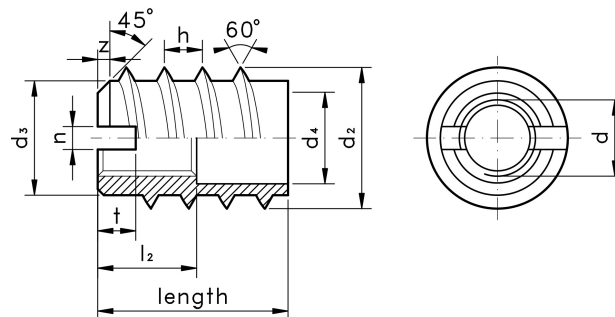
<b>Thread Size, d</b>	<b>M3</b>	<b>M4</b>	<b>M5</b>	<b>M6</b>	<b>M8</b>	<b>M10</b>	<b>M12</b>	<b>M16</b>	<b>M20</b>
thread width, $d_2$	6	8	10	12	16	18.5	22	25	29
thread minor diameter, $d_3$	4.5	5.5	7.5	9.5	12.5	15	18	20.5	24
aperture diameter, $d_4$ (where applicable)	3.5	4.5	6	7.5	10	12	15	17.5	21
predrilled hole, $d_5$	5	6.5	8.5	10.5	14.5	17	20	22.5	26
thread pitch, $h$	2	2.5	3.5	4	5	5	5	5	5
internal thread length, $l_2$ (where applicable)	5	6	7	9	11	13	16	16	20
slot width, $n$	1	1.2	1.6	2	2.5	3	3	4	5
slot depth, $t$	2	2	3	3	4	5	5	6	6
chamfer, $z$	0.6	0.6	0.8	1	1	1.6	1.6	1.6	1.6

## Notes on Installation

This insert can be driven into the wooden workpiece using a flat-head screwdriver or a threaded mandrel.

The predrilled hole size is given as a guide only, and should be adjusted to suit the job at hand.

## Appendix I



**Figure 2: Threaded Insert for Wood Type B to DIN 7965**

For verification of details and for further information, please refer to the DIN standard document for this item.

E&OE.