



Westfield Fasteners Product Specification:

Swage Eye Terminal

This product guide contains the specification for Swage Eye Terminals, a series of standard parts available from Westfield Fasteners.

Product Description

Wire rope swage terminal with eye, with a bore hole for the wire rope to be inserted into. Once the wire and swage terminal is pressed (swaged) together it creates a connection point at the end of a length of wire through the eye. The metal wire can then be incorporated into a wire rope system for railings, marine uses, plant supports etc.

Use the same diameter wire rope as the diameter of the internal bore, as the hole is 3-5 % bigger, to allow the wire to fit easily.

After pressing/swaging properly, the metal of the swage eye flows into the grooved surface of the wire rope. This results a very firm and strong connection.

You should not push the rope all the way into the sleeve, but always leave at least the diameter of the rope at the end, so that the rope has room to expand during pressing.

The swage eye terminal may elongate by 1-2 millimetres due to the pressing process.

Refer to figure 1 and table 1 for product dimensions.

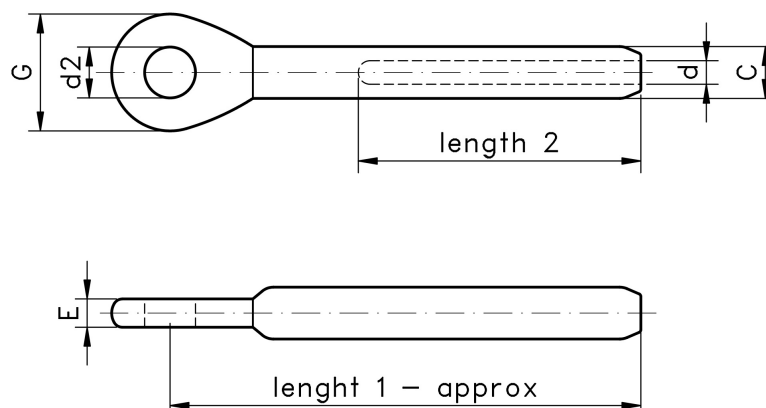


Figure 1: Swage Eye Terminal

Table 1: Swage Eye Terminal Dimensions (mm)

d	Length 1	Length 2	E	d2	C
2.5	50	30	3	5.4	5.5
3.0	55	36	4	6.5	6.3
4.0	65	39	6	8.5	7.5
5.0	80	50	7	10.0	9.0
6.0	94	62	8	12.5	12.5
8.0	124	85	10	14.5	16.0
10.0	142	90	12	16.4	18.0
12.0	160	105	16	19.3	20.0