



## Westfield Fasteners Product Specification:

### Eye Terminal with Right Hand Thread

This product guide contains the specification for Threaded Eye Terminals with a Right Hand Thread, a series of standard parts available from Westfield Fasteners.

#### Product Description

Marine grade stainless steel eye with an external thread. These are used in wire cable and rope constructions, such as railings, rope bracing and climbing plant supports.

Eye terminals can be connected to other terminals or other components with a compatible internal metric thread, such as a sleeve in a turnbuckle arrangement. This would then be used to adjust the tension of any connected cables or ropes.

Shackles, spring hooks and other fittings can be connected through the eye (the hole).

Eye terminals are also known as standard eye terminals - external thread.

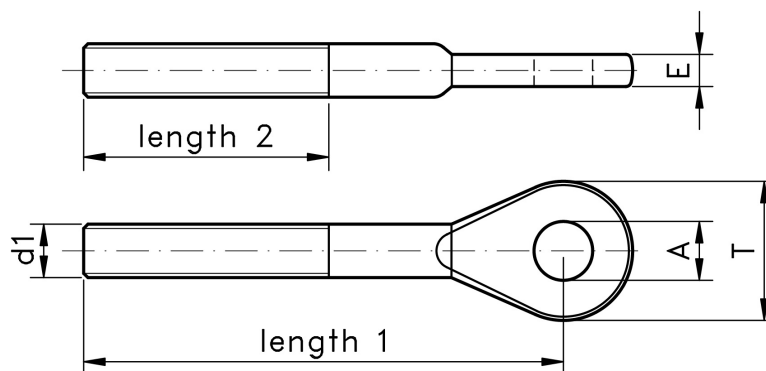


Figure 1: Eye Terminal with Right Hand Thread

**Table 1: Threaded Eye Terminal Dimensions (mm)**

<b>d1</b>	<b>Length 1</b>	<b>Length 2</b>	<b>A</b>	<b>T</b>	<b>E</b>
5 (M5 LH)	45	23	5.5	13	3
6 (M6 LH)	47	28	6.5	14	4
8 (M8 LH)	55	40	8.5	18	5
10 (M10 LH)	65	47	10.5	22	6