



## Westfield Fasteners Product Specification:

### Eye Terminal with Left Hand Thread

This product guide contains the specification for Threaded Eye Terminals with a Left Hand Thread, a series of standard parts available from Westfield Fasteners.

#### Product Description

Marine grade stainless steel eye with an external left hand thread. These are used in wire cable and rope constructions, such as railings, rope bracing and climbing plant supports.

Eye terminals can be connected to other terminals or other components with a compatible internal metric left hand thread. Left hand threads in fasteners are much more unusual than right hand threads, but these threaded eye terminals are most often used in a turnbuckle assembly where they are paired with a right hand threaded example for cable tensioning.

Shackles, spring hooks and other marine type fittings can be connected through the eye (the hole). These eye terminals are also known as standard eye terminal - external thread.

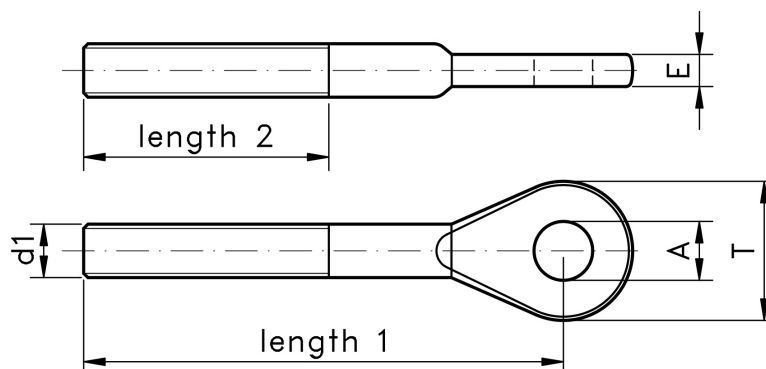


Figure 1: Eye Terminal with Left Hand Thread

**Table 1: Threaded Eye Terminal Dimensions (mm)**

<b>d1</b>	<b>Length 1</b>	<b>Length 2</b>	<b>A</b>	<b>T</b>	<b>E</b>
5 (M5)	45	23	5.5	13	3
6 (M6)	47	28	6.5	14	4
8 (M8)	55	40	8.5	18	5
10 (M10)	65	47	10.5	22	6