



## Westfield Fasteners Product Specification:

### Twisted Shackle

This product guide contains the specification for Twisted Shackles, a series of standard parts available from Westfield Fasteners.

#### Product Description

Forged marine grade stainless steel twisted shackle. The 90 degree twist within the body of the shackle allows for an aligned and kink free attachment for boat rigging, sail clews and linking webbing straps. Twisted shackles are also used by breakdown vehicles when attaching a tow rope.

The shackle is closed with a threaded pin bolt. This makes it fast and easy to change connections for ropes, wire ropes and chains.

Being forged, these twisted shackles are strong and loadable. Please refer to the working load limits and the breaking load weights in Table 1. Figure 1 and table 1 below also show the dimensions for sizes from M4 to M12.

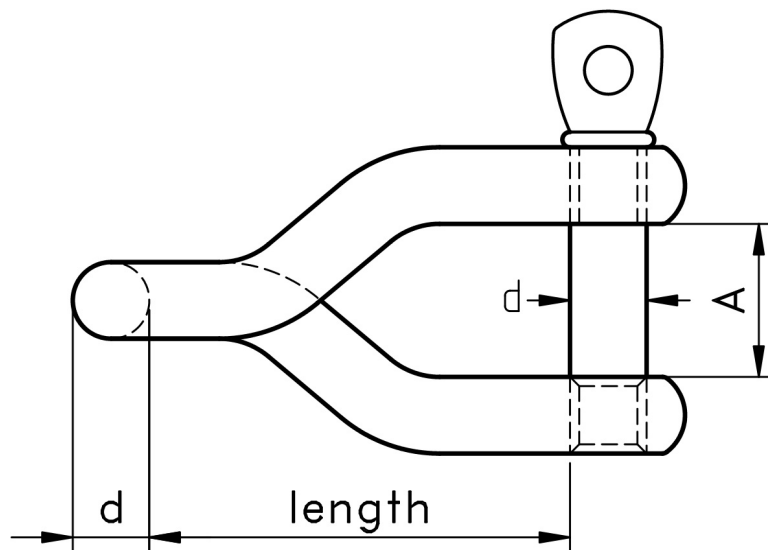


Figure 1: Twisted Shackle

**Table 1: Dimensions & Tolerances**

| <b>d (mm)</b> | <b>Length (mm)</b> | <b>A (mm)</b> | <b>Working Load Limit (kg)</b> | <b>Breaking Load (kg)</b> |
|---------------|--------------------|---------------|--------------------------------|---------------------------|
| 4, M4         | 22                 | 8             | 150                            | 600                       |
| 5, M5         | 27.5               | 10            | 230                            | 925                       |
| 6, M6         | 33                 | 12            | 335                            | 1350                      |
| 8, M8         | 44                 | 16            | 600                            | 2400                      |
| 10, M10       | 55                 | 20            | 950                            | 3800                      |
| 12, M12       | 66                 | 24            | 1400                           | 5600                      |